



2008 MUSTANG



Contents

▶ V6 Coupe & Convertible	2-3
▶ GT Coupe & Convertible	4-5
▶ Shelby GT500	6
▶ Customization	7-8
▶ Specifications	9-13

[V6 ▶](#)[GT ▶](#)[GT500 ▶](#)[ADD-ONS ▶](#)[RACING ▶](#)[SPECS ▶](#)

A steed for every need.

- ▶ 210-hp Mustang V6
- ▶ 300-hp Mustang GT
- ▶ 500-hp Shelby GT500

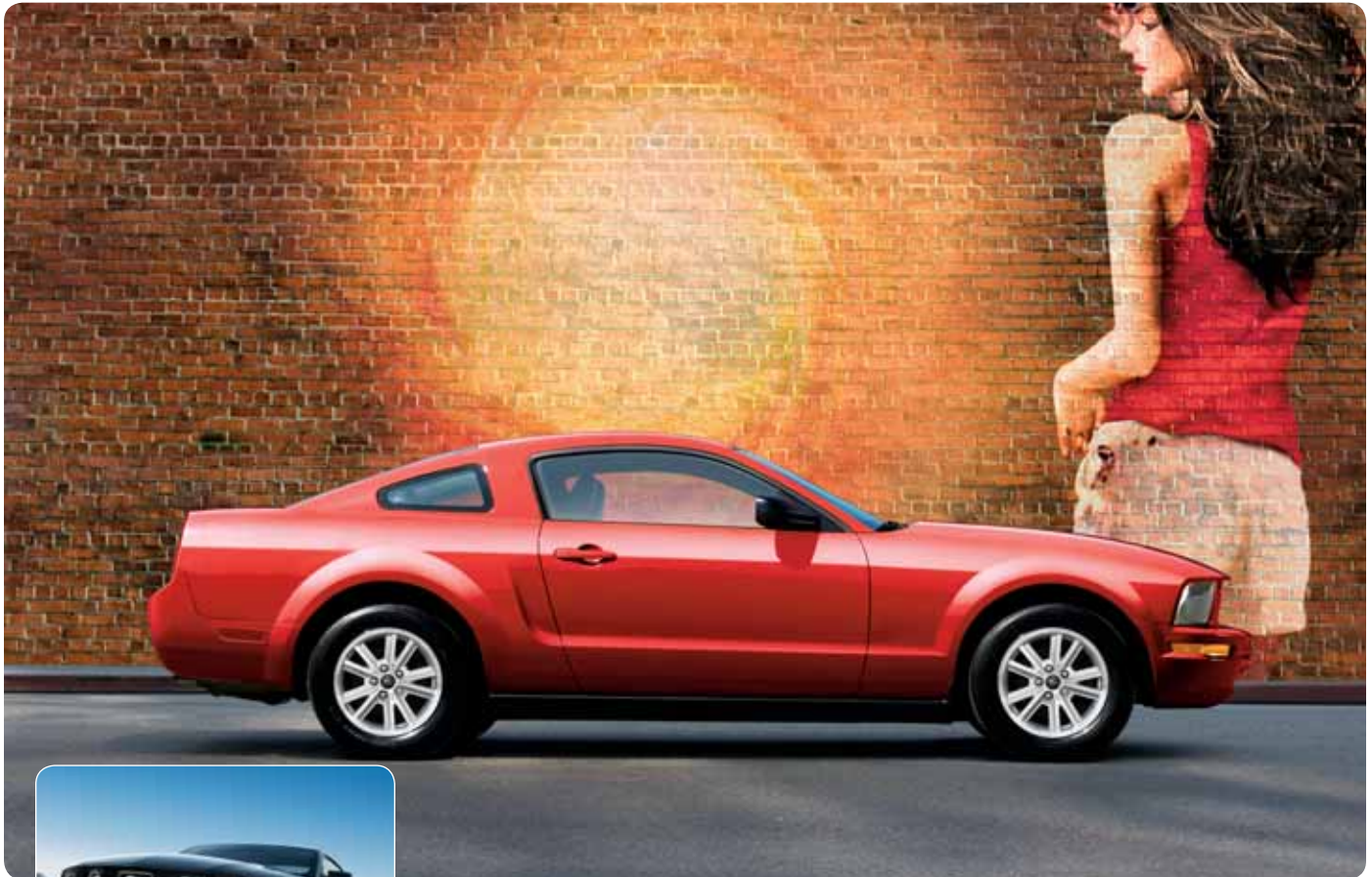


Legendary performance matches legendary looks. Making Mustang the best-selling sports car in America. Tons of personalization options fuel that passion. Meaning Mustang enthusiasts can customize their trusty steed – be it a coupe or convertible – to their every desire. Flex your muscle in Mustang: America's pony car.

“Highest Ranked Midsize Sporty Car in Initial Quality by J.D. Power and Associates.”¹

¹Ford Mustang received the lowest number of problems per 100 vehicles among midsize sporty cars in the proprietary J.D. Power and Associates 2007 Initial Quality StudySM (IQS). Study based on responses from 97,390 new-vehicle owners, measuring 250 models and measures opinions after 90 days of ownership. Proprietary study results are based on experiences and perceptions of owners surveyed in February-May 2007. Your experiences may vary. Visit jdpower.com.





Mustang V6 Packages

Wildly popular, the optional V6 Pony Package (above) corrals a speeding Pony and fog lamps in a chrome grille bezel, and there's a spoiler in the rear. A tri-bar Pony caps the 17" painted-aluminum wheels with machined rims. You also get this with the Pony Package:

- ▶ GT-modified front and rear stabilizer bars
- ▶ Carpeted front floor mats with chrome badging
- ▶ Mustang rocker stripes and Pony fender badges

The Exterior Sport Appearance Package (shown right) is another option with lower bodyside tape stripes, plus a seductive spoiler for greater V6 wow. ▶

[V6 ▶](#)
[GT ▶](#)
[GT500 ▶](#)
[ADD-ONS ▶](#)
[RACING ▶](#)
[SPECS ▶](#)

Get in and gun it.

No matter the style of 'Stang, you'll never miss a performance beat. The 4.0L V6 cranks out a rousing 210 hp and 240 lb.-ft. of low-end torque. Bonus: Every coupe earned the government's highest frontal crash test and rollover resistance ratings – 5 Stars from NHTSA.¹ You also get this on Mustang V6 Deluxe:

- ▶ 16" bright machined-aluminum wheels
- ▶ Power windows, locks, brakes and steering
- ▶ 2 power points and 50/50 split-folding rear seat²
- ▶ 4-speaker, 160-watt audio system and CD player
- ▶ Front-seat side airbags and dual-stage front airbags

“First Place: The Quickest Cars of 2007: Less Than \$20,000: Mustang V6. Fitted with the five-speed manual, this Mustang posts an astounding 6.5-second dash to 60 mph, and even the automatic is only four 10ths behind.”

– CARandDRIVER.com, April 2007



¹National Highway Traffic Safety Administration. 2007 model year rating. ²Coupe only.



2+2 Seating ▲

Since you can't get enough of "Mustang," it's repeated again and again on the seating decked out in Light Graphite cloth; the inside's also enhanced with the optional Interior Upgrade Package and its many satin-aluminum touches.



Automatic transmission, optional. ▲

[V6 ▶](#)
[GT ▶](#)
[GT500 ▶](#)
[ADD-ONS ▶](#)
[RACING ▶](#)
[SPECS ▶](#)

Sizzlin' suncatcher.

Mustang was designed to convey true solidity with its top down: Joints and rocker panels are as firm as those on the coupe. The Z-fold ragtop boasts a 3-layer build – waterproofed outside, eye-pleasing inside and sound-deadened in between. You also get this on Mustang V6 Premium:

- ▶ 16" bright machined-aluminum wheels with chrome spinners
- ▶ 6-way power driver seat with power lumbar
- ▶ 8-speaker, 500-watt Shaker 500 Audio System
- ▶ 6-disc in-dash CD changer and MP3 audio input jack
- ▶ Tire Pressure Monitoring System

“It's as genuine as the '64½ original. And with its throwback charm and modern mechanics, we doubt anyone can resist this American-metal meets the sky icon, and we're not gonna try!”

– MotorWeek





Mustang GT Packages

Paying tribute to the highly prized '68 GT California Special (GT/CS), today's mod GT/CS option flaunts a front fascia with a prominent air intake and low chin spoiler. The rear fascia integrates a race-worthy diffuser (above). You also get this with the California Special Package:

- ▶ Side scoops and mid-body GT/CS stripes
- ▶ 18" polished-aluminum wheels
- ▶ Bright rolled exhaust tips
- ▶ Two-tone, leather-trimmed seats

The GT/CS poised at right wields the optional GT Appearance Package's awesome hood scoop. ▶

[V6 ▶](#)
[GT ▶](#)
[GT500 ▶](#)
[ADD-ONS ▶](#)
[RACING ▶](#)
[SPECS ▶](#)

Positively kicks butt.

Packing a punch that's virtually unbeatable, every Mustang GT arms you with the award-winning, aluminum-block 4.6L 3-valve SOHC V8 – serving up a full-on 300 hp and a street-scorching 320 lb.-ft. of torque; more to the point, 0–60 is achieved in a scant 4.9 secs.¹

You also get this on Mustang GT Deluxe:

- ▶ 5-speed manual GT transmission
- ▶ Limited-slip differential and Traction Control
- ▶ Front and rear stabilizer bars
- ▶ 17" painted-aluminum wheels and rear spoiler
- ▶ Power driver seat, lumbar, windows and locks



“At the moment, it doesn't compete with anything. It's a Mustang. Period.”

– The Auto Channel™

¹Road & Track, April 2005.



300-HP V8 ▲

Winner 3 years running² in *Ward's 10 Best Engines* review. *WardsAuto.com* heaped praise: "... more convincing than most engines while just idling in the driveway."

²2005, 2006 and 2007.

Chamois Leather-Trimmed Seating ▶

The optional Premier Trim With Color Accent Package also includes stitched, soft-touch detailing. Woven Charcoal aluminum IP accents are available on the Interior Upgrade Package (shown right).

[V6 ▶](#)
[GT ▶](#)
[GT500 ▶](#)
[ADD-ONS ▶](#)
[RACING ▶](#)
[SPECS ▶](#)

How to top a GT coupe.

Mustang GT convertible takes to the sky as eagerly as the heroic WWII P-51 Mustang fighter plane. In a GT soft top, you're bound to run a little faster for a little longer, soaking up extra sunshine and envious stares. All the more reason why so much time was spent perfecting the whole mean machine. You also get this on Mustang GT Premium:

- ▶ Power top with glass rear window and defroster
- ▶ Leather-trimmed sport buckets (available heated¹)
- ▶ 8-speaker, 500-watt Shaker 500 Audio System
- ▶ 6-disc in-dash CD changer and MP3 audio input jack
- ▶ Front-seat side airbags and dual-stage front airbags

“Stoplight to stoplight, the GT convertible has got game ... runs with some cars costing twice as much.”

– *MotorTrend.com*



¹Heated driver and front-passenger seats optional.



"One fundamental muscle car requirement is looking hot with the hood open or closed. Here, the Shelby GT500 sets new standards."

— *AUTOMOBILE Magazine* (automobilemag.com)



AUTOMOBILE Magazine gazed at the engine bay and gushed: "... one howling supercharger, four whirring camshafts, thirty-two valves, and 5.4 liters of ripping V8 are jammed beneath the Shelby's humped-up aluminum hood."

GT500 Premium Interior Trim Package ▶

An optional upgrade (shown right).

[V6 ▶](#)
[GT ▶](#)
[GT500 ▶](#)
[ADD-ONS ▶](#)
[RACING ▶](#)
[SPECS ▶](#)

Spits a mean 500 horses.

The hypnotizing Shelby GT500 injects 480 lb.-ft. of torque to its lethal 500-hp venom. Performance guru Carroll Shelby and Ford SVT conjured this spellbinding take on the '60s original. The mind-blowing V8 is supercharged, water-to-air intercooled, and fortified with 4-valve aluminum heads and a steel crankshaft. More modifications include:

- ▶ Heritage-cued fascias, spoiler and Le Mans racing stripes
- ▶ Power dome hood with twin heat extractors
- ▶ 6-speed manual and tuck-and-roll leather seat inserts
- ▶ X-pipe pressure-wave exhaust tuning
- ▶ Goodyear® F1 Supercar tires on 9.5"-wide wheels
- ▶ Brembo® 14" front rotors and 4-piston calipers



"... makes Chevy and Dodge fans purple with envy."

— *AUTOMOBILE Magazine* (automobilemag.com)



V6 ▶

GT ▶

GT500 ▶

ADD-ONS ▶

RACING ▶

SPECS ▶

Mustang Noise (& Nav)

The boomin' club scene – deep bass, crisp highs and full, balanced mid-range – captured in a car. Every sound blarin' out of Mustang takes on a new dimension. Available audio:

- ▶ Mustang-exclusive Shaker 500 with 8 speakers
 - ▶ 2 door-mounted subwoofers
 - ▶ 6-disc in-dash CD changer
- ▶ Mustang-exclusive Shaker 1000 with 10 Audiophile® speakers
 - ▶ 4 subwoofers (dual 500-watt thumpers in the trunk)
 - ▶ 6-disc in-dash CD changer
- ▶ SIRIUS Satellite Radio² (complete details at sirius.com)
 - ▶ Sports, news, talk and 100% commercial-free music
 - ▶ Complimentary online access when you subscribe

²Service not available in Alaska or Hawaii. See your Ford Dealer or contact SIRIUS at 1-888-539-7474 for more information.

Light 'em up.

Everything inside exudes a powerful allure, from the chrome-ringed, double-barrel performance gauges to the available T-handled automatic shifter or beefy manual knob. Even the flush-mounted audio and climate controls have strong character. Add optional lighting special effects – that you can change on the fly – and you're in for a real treat:

- ▶ Ambient lighting is variable in 7 different hues
 - ▶ Illuminate all 4 footwells
 - ▶ Illuminate the front cupholders
- ▶ MyColor™ lighting¹ is variable in 125 different hues
 - ▶ Set instrument illumination as you like



“... it's easy to use, and it can brighten your day, and especially your night, as you drive. We're all for that.”

– *NewCarTestDrive.com*

¹Part of the optional Interior Upgrade Package.



Ashley Force and John Force ▶

Mustang has been a major player in the performance world straight out of the gate: A month after its April '64 debut, it served as the Official Pace Car of the Indy 500. Now, Mustang competes in Formula Drift,[®] Grand-Am Koni Challenge and Rolex GT Series, National Hot Rod Association (NHRA) Funny Car, and the Sports Car Club of America (SCCA) circuit. Pit it at fordracing.com for latest race results.

V6 ▶

GT ▶

GT500 ▶

ADD-ONS ▶

RACING ▶

SPECS ▶

Smoke all comers.

Surgeon General's warning be damned. Ford Racing offers street-legal performance packs for your Mustang V6, Mustang GT and Shelby GT500 that can be installed by your Ford Dealer. When dealer-installed, these packs and parts are now backed by a Ford Racing Limited Warranty.¹ All parts are designed by Ford Racing engineers to work together as turnkey performance-enhancing packages.

PERFORMANCE PACKS NOW WITH LIMITED WARRANTY

- ▶ **HANDLING PACKS FOR V6, GT & GT500 (3-year/36,000-mile Limited Warranty¹)**
 - Uniquely tuned dampers, lower/stiffer springs, anti-roll bars and urethane bushings
 - Ford Racing strut-tower brace
- ▶ **POWER UPGRADE PACKAGES FOR V6, GT & GT500 (3-year/36,000-mile Limited Warranty¹)**
 - Cold Air Kit with larger mass airflow sensor housing • Ford Racing performance calibration • Tuned mufflers
- ▶ **SUPER PACKS FOR GT & GT500 (12-month/12,000-mile Limited Warranty¹)**
 - GT – 400 HP Supercharger Kit • GT – 500 HP Supercharger Kit (not available with Limited Warranty) • GT500 – 600 HP Supercharger Kit

¹Limited Warranty available when Ford Dealer installed only. Phone 1-800-FORD-788 and go to fordracingparts.com for complete details.

GT500 Specifications

[V6 ▶](#)
[GT ▶](#)
[GT500 ▶](#)
[ADD-ONS ▶](#)
[RACING ▶](#)
[SPECS ▶](#)


STANDARD FEATURES

MECHANICAL

5.4L supercharged, intercooled DOHC V8 engine
 500 hp @ 6000 rpm and 480 lb.-ft. of torque @ 4500 rpm
 9.0 psi boost
 Forged-steel crankshaft
 Forged-steel I-Beam connecting rods
 6-speed manual transmission
 Dual 60-mm electronic throttle body
 4-channel ABS brakes with traction control system
 Modified 8.8" live axle with 3.31:1 gear ratio
 Brembo® 14" vented front rotors and 4-piston calipers
 11.8" vented rear rotors with 2-piston calipers
 SVT-tuned suspension with unique shocks and springs
 Tuned stainless steel X-pipe exhaust
 P255/45ZR18 front F1 Supercar tires
 P285/40ZR18 rear F1 Supercar tires
 18" x 9.5" bright machined-aluminum wheels with SVT center caps

EXTERIOR

Premium cloth convertible top (convertible only)
 Power dome hood with twin heat extractors
 Unique rear spoiler
 Le Mans racing stripes (coupe only)
 GT500 side rocker stripes
 Front fog lamps

INTERIOR

Shaker 500 Audio System
 6-gauge cluster (including boost) with MyColor™ and unique red, white & blue illumination setting
 Charcoal Black leather-trimmed front bucket seats with Cobra logo (Charcoal Black or Crimson Red inserts)
 Unique leather-trimmed steering wheel with Red stitching

SAFETY/SECURITY

Front airbags and front-seat side airbags
 Active Anti-Theft System

OPTIONS

Shaker 1000 Audio System
 SIRIUS Satellite Radio
 GT500 Premium Interior Trim Package – Includes wrapped and stitched instrument panel brow and center console, upgraded door armrests, auto-dimming rearview mirror with compass, and aluminum pedal covers
 Stripe delete preferences
 Ambient lighting
 DVD-based Navigation System (not available with Shaker 1000)
 HID headlamps

PAINT/TRIM/STRIPE COMBOS

Exterior Colors **Stripe Colors**

Interior Colors

● = Charcoal Black ● = Crimson Red

Oxford White

Vista Blue

Alloy

Satin Silver

Ebony

Torch Red
 Alloy Metallic
 Vista Blue Metallic
 Performance White
 Vapor Silver Metallic
 Grabber Orange
 Black

V6/GT Specifications

[V6 ▶](#)
[GT ▶](#)
[GT500 ▶](#)
[ADD-ONS ▶](#)
[RACING ▶](#)
[SPECS ▶](#)

MUSTANG V6



DELUXE

select standard content:

4.0L SOHC V6 engine • 5-speed manual transmission (3.31 axle ratio) • Compact spare tire • Front stabilizer bar • Stainless steel single exhaust • Power 4-wheel disc brakes • Power rack-and-pinion steering • Coil-over-strut front suspension • Coil-spring 3-link, solid-axle rear suspension • Personal Safety System® • Front-seat side airbags • 4-way manual height-adjustable driver seat • 50/50 split-folding rear seat (coupe only) • Carpeted front floor mats • Tilt steering wheel • Cruise control • Full center console with armrest and storage • Power door locks and windows with one-touch-up/-down feature • Remote keyless illuminated entry • Air conditioning • AM/FM single-CD audio system • Vinyl top (convertible only) • 16" bright machined-aluminum wheels • P215/65R16 all-season tires • Tire Pressure Monitoring System

PREMIUM

includes V6 Deluxe content, plus:

Shaker 500 Audio System with 6-disc in-dash CD changer, 8 speakers and MP3 capability • 6-way power driver seat with power lumbar • 16" bright machined-aluminum wheels with chrome spinners

MUSTANG GT



DELUXE

includes V6 Deluxe content, plus:

4.6L SOHC 3-valve V8 engine • 5-speed manual GT transmission (3.31 axle ratio) • Stainless steel dual exhaust with bright tips • Power 4-wheel disc Anti-lock Brake System (ABS) • Front and rear stabilizer bars • Traction Control • Fog lamps • Rear spoiler • 6-way power driver seat with power lumbar • 17" painted-aluminum wheels • P235/55ZR17 all-season performance tires

PREMIUM

includes GT Deluxe content, plus:

Shaker 500 Audio System with 6-disc in-dash CD changer, 8 speakers and MP3 capability • Leather-trimmed sport bucket seats

WHEELS

17" Painted-Aluminum
with Tri-Bar Pony Center Cap
Standard with V6 Pony Package

16" Bright Machined-Aluminum
Standard on V6 Deluxe

16" Bright Machined-Aluminum
with Chrome Spinner
Standard on V6 Premium

17" Painted-Aluminum
Standard on GT



18" Polished-Aluminum
with Tri-Bar Pony Center Cap
Available on GT;
Standard with
GT California Special Package

18" Premium Polished Forged-Aluminum
Available on V6 Premium
(coupe only)

18" Premium Aluminum
with Tri-Bar Pony Center Cap
Available on GT

17" Bright Machined-Aluminum
with Tri-Bar Pony Center Cap
Available on GT and V6 Premium

V6/GT Specifications

[V6 ▶](#)
[GT ▶](#)
[GT500 ▶](#)
[ADD-ONS ▶](#)
[RACING ▶](#)
[SPECS ▶](#)

FEATURES & OPTIONS

V6 DELUXE			
V6 PREMIUM			
GT DELUXE			
GT PREMIUM			
MECHANICAL			
●	●	—	—
—	—	●	●
—	—	○	○
○	○	○	○
—	—	●	●
—	—	—	○
●	—	—	—
—	●	—	—
—	—	●	●
—	○	○	○
—	—	○	○
—	—	○	○
—	○	—	—
●	●	—	—
—	○	●	●
—	—	○	○
●	●	—	—
—	—	●	●
SAFETY/SECURITY			
—	—	○	○
—	—	●	●
—	○	○	○
—	—	○	○
SEATING			
—	●	●	●
—	○	○	○
—	○	—	—
—	○	○	●
—	○	○	○
AUDIO			
●	—	●	—
—	●	○	●
—	○	○	○
—	○	○	○
—	○	—	○
EXTERIOR			
—	○	○	○
—	○	○	○
—	—	●	●
—	—	●	●
—	—	○	○

¹Shown with optional automatic transmission.
 ©2007 SIRIUS Satellite Radio Inc. "SIRIUS," the SIRIUS dog logo and "The Best Radio on Radio" are registered trademarks of SIRIUS Satellite Radio Inc. Audiophile is a registered trademark of Audiophile, Inc.

ENGINES

	4.0L SOHC V6	4.6L 3-VALVE V8
Horsepower (hp @ rpm)	210 @ 5300	300 @ 5750
Torque (lb.-ft. @ rpm)	240 @ 3500	320 @ 4500

V6 DELUXE			
V6 PREMIUM			
GT DELUXE			
GT PREMIUM			
PACKAGES			
○	○	—	—
—	○	○	○
—	○	○	○
—	○	○	○
—	○	—	○
—	○	○	○
—	○	—	—
—	○	—	—
○	○	—	—
—	—	○	○
—	—	—	○
○	○	—	—

● Standard ○ Optional — Not Available

2008 EPA-ESTIMATED FUEL ECONOMY

	4.0L SOHC V6	4.6L 3-VALVE V8
Manual transmission	17 mpg city/26 hwy.	15 mpg city/23 hwy.
Automatic transmission	16 mpg city/24 hwy.	15 mpg city/22 hwy.

V6/GT Specifications

[V6 ▶](#)
[GT ▶](#)
[GT500 ▶](#)
[ADD-ONS ▶](#)
[RACING ▶](#)
[SPECS ▶](#)

CONVERTIBLE TOP COVERS



PAINT/STRIPE COMBOS

Exterior Colors

Stripe Colors

- Black
- White
- Pearl Gold

Alloy Metallic Grabber Orange Black Silver Metallic Vapor Silver Metallic Windveil Blue Metallic Performance White Vista Blue Metallic Dark Candy Apple Red Metallic Torch Red

STANDARD INTERIOR¹



V6 CLOTH
MUSTANG Pattern

V6 LEATHER TRIM

OPTIONAL INTERIOR UPGRADE PACKAGE¹



GT CLOTH
Stamping Horse Pattern

GT LEATHER TRIM

PAINT/TRIM/TOP COMBOS

											MEDIUM PARCHMENT
											LIGHT GRAPHITE
											DARK CHARCOAL
											DARK CHARCOAL SEATS WITH PARCHMENT INTERIOR
											DARK CHARCOAL SEATS WITH DOVE INTERIOR
											DARK CHARCOAL INTERIOR WITH RED SEATS
											DARK CHARCOAL INTERIOR WITH CHAMOIS SEATS
											DARK CHARCOAL INTERIOR WITH DARK CHARCOAL SEATS
											EXTERIOR COLORS
											Performance White
											Grabber Orange
											Torch Red
											Dark Candy Apple Red Metallic
											Alloy Metallic
											Windveil Blue Metallic
											Vista Blue Metallic
											Silver Metallic
											Vapor Silver Metallic
											Black
											CONVERTIBLE TOP COLORS
											Parchment
											Black ²

¹Shown with optional automatic transmission.

²Black top not available when Medium Parchment interior is combined with Vista Blue Metallic exterior.

Ford uses clearcoat paint for beauty and protection. Colors shown are representative only. Not all colors are available on all models. See your dealer for actual paint/trim options. Vehicles shown may contain optional equipment.

Comparisons based on 2007 competitive models, publicly available information and Ford certification data at time of printing. Some features discussed may be optional. Vehicles shown may contain optional equipment. Features shown may be offered only in combination with other options or subject to additional ordering requirements or limitations. Dimensions shown may vary due to optional features and/or production variability. Following publication of the catalog, certain changes in standard equipment, options and the like, or product delays may have occurred which would not be included in these pages. Your Ford Dealer is the best source for up-to-date information. Ford Division reserves the right to change product specifications at any time without incurring obligations.

Specifications

V6 ▶

GT ▶

GT500 ▶

ADD-ONS ▶

RACING ▶

SPECS ▶



Windveil Blue Metallic



Performance White



Silver Metallic



Dark Candy Apple Red Metallic



Alloy Metallic



Grabber Orange



Vista Blue Metallic



Black



Vapor Silver Metallic



Torch Red



New Vehicle Limited Warranty

We want your Ford Mustang ownership experience to be the best it can be. So under this warranty, your new vehicle comes with 3-year/36,000-mile Bumper-to-Bumper Coverage, 5-year/60,000-mile Powertrain Warranty Coverage and Roadside Assistance, 5-year/50,000-mile Safety Restraint Coverage, and 5-year/unlimited-mile Corrosion (Perforation) Coverage — all with no deductible. Please ask your Ford Dealer for a copy of this limited warranty.

For more assurance: The 5-year/60,000-mile powertrain limited warranty is fully transferable, has no deductible, and provides you with an additional 2 years or 24,000 miles of coverage — on select components, including the engine and transmission — beyond the standard 3-year/36,000-mile Bumper-to-Bumper Coverage. Roadside Assistance is extended to 5 years or 60,000 miles, so you have the security of knowing that help may be only a phone call away should you run out of fuel, lock yourself out of the vehicle, or need towing. Your Ford Dealer can provide complete details on all of these advantages.



Genuine Ford Accessories are designed and engineered specifically for Ford vehicles. Visit our website at fordaccessoriesstore.com to use the Accessorizer, and to learn about complete accessory details and purchase instructions.



Along with Ford Motor Company, you can help ensure the future of this proud symbol of American freedom: savethemustangs.org.



Get the ride you want. Whether you plan to lease or finance, you'll find the choices that are right for you at Ford Credit. Ask your Ford Dealer for details or check us out at fordcredit.com.



Get Ford Motor Company quality in your auto insurance. Our program offers industry-leading benefits and competitive rates. Call 1-877-367-3847, or visit us at fordvip.com for a no-obligation quote. Insurance offered by American Road Services Company (in CA, American Road Insurance Agency), a licensed agency and subsidiary of Ford Motor Company.



For a purchase or lease, the Ford **Extended Service Plan (ESP)** gives you "Peace-of-Mind" protection designed to cover key vehicle components and protect you from the cost of unexpected repairs. Ask your dealer for an ESP, the only service contract backed exclusively by Ford and honored at all Ford Lincoln Mercury dealerships.